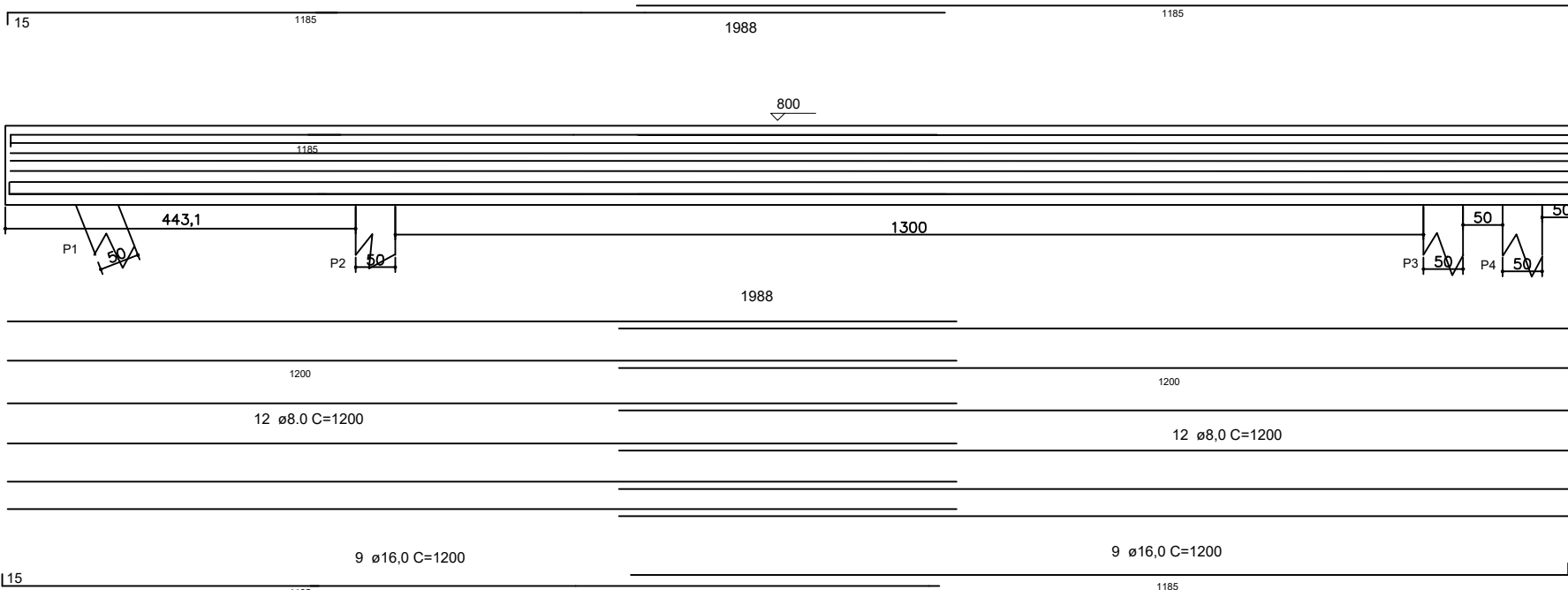


V- 1 (40 x100)

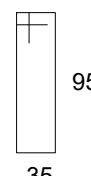
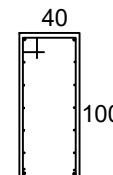
2 ø16,0 C=1200

2018

2 ø16,0 C=1200



SEÇÃO A-A ESC 1:50



117 ø 8,0 A C/17 - C=290

RESUMO AÇO CA 50-60			
AÇO	BIT (mm)	COMPR (m)	PESO (kg)
50	16,0	316,28	438,84
50	12,5	1286,4	1238,8
50	10,0	60,5	37,33
50	8,0	579,3	247,67
50	6,3	993,6	243,43
Peso Total 50 (+10%)=			2206,18 kg
Peso Total 60 (+3%)=			66,20 kg
VOLUME DO CONCRETO 25 MPA-			42,85 m ³
ÁREA DE FORMA -			85,00 m ²

AÇO	N	DIÂMETRO (mm)	QUANT	COMPRIMENTO	
				UNIT (cm)	TOTAL (cm)
P-1 e 5	CA 50	12,5	20	1200	24000
	CA 50	12,5	20	240	4800
	CA 50	12,5	20	300	6000
Estribo	CA 50	6,3	80	170	13600
	CA 50	6,3	80	170	13600
P-2,3 4,6,7,8	CA 50	12,5	60	1200	72000
	CA 50	12,5	20	300	18000
	CA 50	6,3	480	170	81600
ESTEIRA	CA 50	10,0	24	160	3840
	CA 50	10,0	13	170	2210
	CA 50	10,0	15	190	2850
VI	CA 50	16,0	22	1200	26400
	CA 50	8,0	24	1200	28800
	CA 50	8,0	117	290	33930
VIGAS 2,3,4,5	CA 50	12,5	16	240	3840
	CA 50	6,3	52	80	4160
AÇO 16,0	CA 50	16,0	32	120	3840